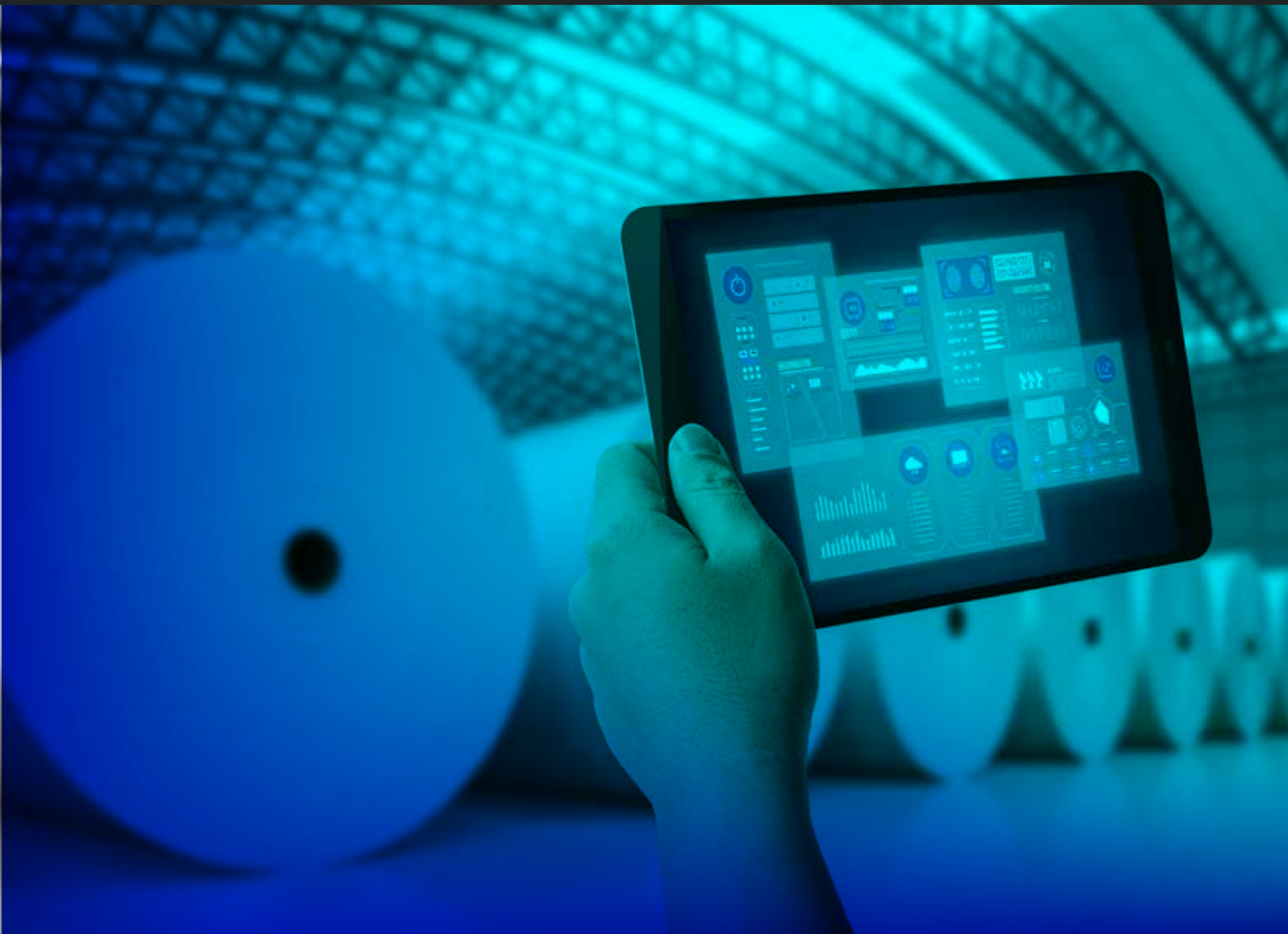


# TCS Accelerated Solution Deployed in SAP for Paper and Packaging Firms

Manufacturing



The paper and packaging industry is evolving at breakneck speed with increasing demand for paper-based flexible packing, recycled paper, and fluff pulp for personal products. At the same time, consumer and regulatory expectations are compelling firms to create sustainable and innovative solutions. However, high operational and raw material costs continue to hamper planning, sourcing, warehousing, and logistics functionalities, impacting outcomes. To reduce operational costs and meet emerging demands, paper and packing firms must adopt new pricing strategies, enable new producer and distributor collaboration, and drive rapid transformation through technologies such as automation, mobility, artificial intelligence (AI), analytics, and digital twin.

The Accelerated Solution Deployed in SAP (ASDS), from Tata Consultancy Services, for the paper and packaging industry can help firms transform their business processes by creating a digital core with SAP S/4HANA.

## Overview

As the paper and packaging industry undergoes radical transformation, industry players must be equipped to respond rapidly to evolving customer expectations, standards, and technologies. This calls for a digital foundation – one that simplifies production and reduces complexity and costs. ASDS offers industry-specific enterprise resource planning (ERP) solutions that address operational challenges. It augments SAP S/4HANA's proven ability to embrace emerging scenarios, integrate with other applications in the landscape, and build a digital core that supports the latest technologies. Backed by TCS experts on SAP S/4HANA and other SAP applications, the solution encompasses approximately 60 processes, applicable across industries, along with unique and specific processes for the paper and packaging industry.

## Our Solution

TCS understands the value chain and white spaces in the paper and packaging industry, with respect to SAP S/4HANA offerings. Our domain and technical experts have captured these nuances and translated them into SAP S/4HANA as ready-made offerings. ASDS for the paper and packaging industry encapsulates the following salient features:

- Make-to-stock (MTS) and make-to-order (MTO) capabilities for specific scenarios such as forestry compliance and percentage bill of material (BoM) allocation
- Leveraging the SAP ecosystem for internet of things (IoT) and blockchain to integrate with manufacturing execution systems (MES) for enhanced transparency and minimal manual intervention

- Proof of concept (PoC) for track and trace across the product life cycle using the smart contract functionality in blockchain
- Additional functionalities offered in extended warehouse management (EWM), transportation management, and integrated business planning applications (see Figure 1).

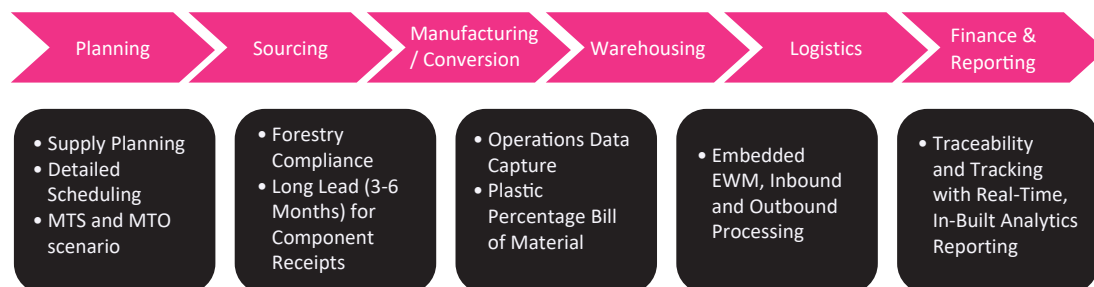


Figure 1: ASDS across the paper and packaging value chain

## Benefits

With ASDS, paper and packaging firms gain numerous advantages:

- **Improved time to value:** Up to 20% reduction in implementation time using preconfigured assets and accelerators
- **Simplified solution customization:** Minimizes the need for complex solution customizations through preconfigured industry-leading processes
- **High quality and low cost:** Reduces total cost of ownership and enhances solution quality by leveraging leading process practices and technologies
- **Minimized risk implementation:** Easy-to-scale, preconfigured approaches, tested features, and proven components for mitigating implementation risk for large enterprises
- **Enhanced performance management:** Delivers tangible business results on an ongoing basis, underpinned by industry expertise, functional capabilities, alliances, and emerging technologies

## The TCS Advantage

By partnering with TCS, paper and packaging companies can benefit from the following:

- **Real-time business context:** TCS' solutions span multiple applications, including SAP S/4HANA in the middle and SAP Integrated Business Planning, along with digital applications in the periphery, mimicking the real-time landscape.
- **Deep domain knowledge:** Backed by a team of experts and dedicated technology professionals, TCS offers seamless SAP application deployment driven by industry-leading best practices.
- **Extensive experience in SAP technologies:** TCS' delivery engagements with SAP span over two decades, with over 8,000 consultants trained in S/4HANA. The consultants work closely with 30 leading organizations on their SAP S/4HANA deployments and PoCs.
- **Dedicated center of excellence:** The dedicated SAP center of excellence (CoE) focuses on providing thought leadership and pre-configured solutions across the SAP portfolio of digital technologies.

#### To know more

Visit the [Manufacturing](#) page on [tcs.com](#)

Email: [manufacturing.solutions@tcs.com](mailto:manufacturing.solutions@tcs.com)

#### About Tata Consultancy Services Ltd (TCS)

Tata Consultancy Services is a purpose-led transformation partner to many of the world's largest businesses. For more than 50 years, it has been collaborating with clients and communities to build a greater future through innovation and collective knowledge. TCS offers an integrated portfolio of cognitive powered business, technology, and engineering services and solutions. The company's 469,000 consultants in 46 countries help empower individuals, enterprises, and societies to build on belief.

Visit [www.tcs.com](#) and follow TCS news [@TCS\\_News](#).

All content/information present here is the exclusive property of Tata Consultancy Services Limited (TCS). The content/information contained here is correct at the time of publishing. No material from here may be copied, modified, reproduced, republished, uploaded, transmitted, posted or distributed in any form without prior written permission from TCS. Unauthorized use of the content/information appearing here may violate copyright, trademark and other applicable laws, and could result in criminal or civil penalties.

Copyright © 2021 Tata Consultancy Services Limited