

Integrations

TCS - Cummins Confidential

Confidentiality Disclaimer: All information contained in this webpage is privileged and confidential and intended solely for the use of the individual or entity to whom it is addressed. Any unauthorized disclosure, copying, or distribution (physical or digital) of the contents is strictly prohibited.

WebLogic Server Monitoring and Auto Restoration for Integrations

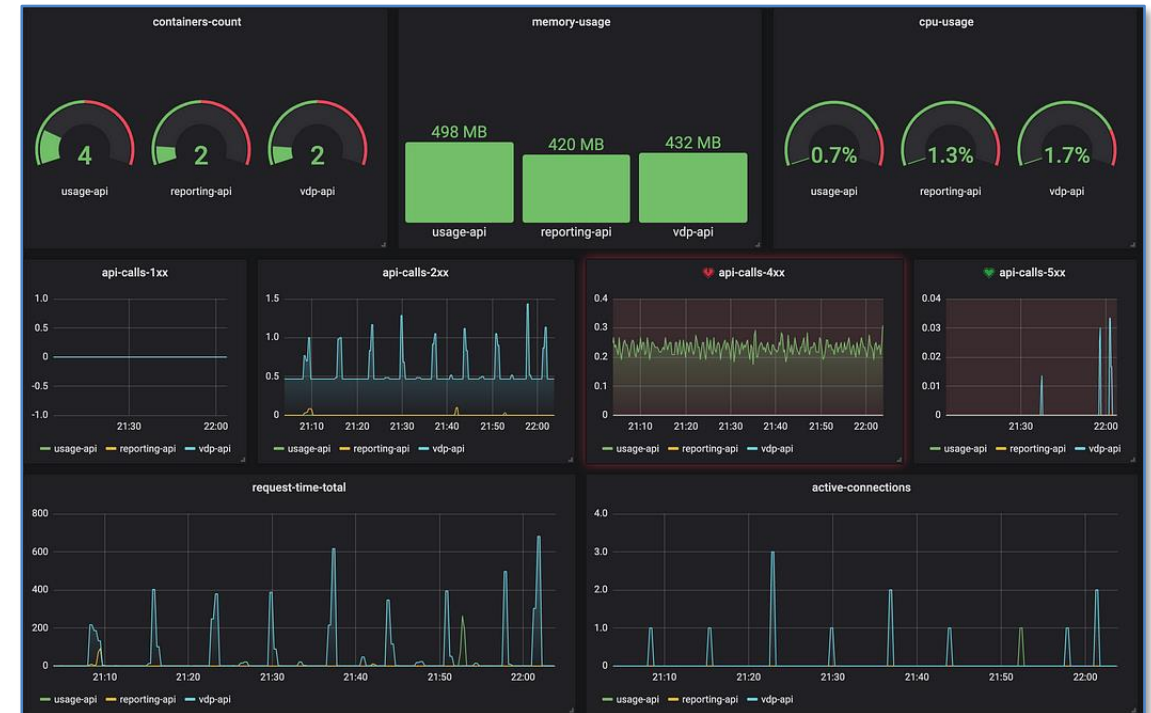
Middleware servers are hosted in the WebLogic servers for Service-oriented architecture, Service Bus. The availability of middleware applications has a proportionate dependency on the WebLogic Availability. Monitoring the WebLogic and initiating the self-heal for the restoration is crucial for keeping the uptime high.

Key Features

- Monitoring the WebLogic server
- Monitoring across multiple domains and nodes
- Initiate Self-heal options with agreed algorithms

Key Outcomes

- Automation of potential impact during patching activity
- 25% Improvement in unplanned outage
- 60% Reduction in manual efforts



Confidentiality Disclaimer: All information contained in this webpage is privileged and confidential and intended solely for the use of the individual or entity to whom it is addressed. Any unauthorized disclosure, copying, or distribution (physical or digital) of the contents is strictly prohibited.